

DWD FREE PATTERN #7 Toboggan Fairisle Hats

Here are two toboggan Fairisle hats that I charted and designed myself. The small one will fit heads 4-5 inches (Riley Kish size) and the large one will fit heads 8-9 inches, such as Volks SD dolls.

Rating: #1 and 2 – Easy (instructions for plain / Intermediate for fairisle work)

I have provided the color charts for both hat sizes if you choose to use them. Both of the color patterns are quite easy but if you choose, you can just knit them in a single color. The smaller hat uses 4/0 (1.2 mm) needles with a very fine gauge. The larger hat uses 2/0 (1.75 mm) needles.



**DollsWest Designs
Cynthia Berrier
532 Crestview Road
Kalispell, MT 59901
dollswest@centurytel.net**

Small Toboggan Hat #1 (Fits heads 4-5 inches)

Yarn: 100% Super fine Lace Weight Merino wool from www.theknitter.com
Gauge 17 stitches per inch, 20 rows per inch on size 4/0 (1.2 mm) needles

Using main color yarn, cast on 79 stitches on 4/0 needles.

Work rib pattern as follows:

Row 1 (RS): [K1, P1]* Repeat to last st, K1

Row 2 (WS): [P1, K1]* Repeat to last st, P1

Repeat rows 1 and 2 for 3 more times, for a total of **8 rows of rib pattern.**

Hat Body: Work color pattern according to chart (page 3). You can ignore the chart and work it in one single color if you so desire.

Begin stockinette stitch pattern:

Row 9: (RS) K all sts (follow color chart)

Row 10: (WS) P all sts (follow color chart)

Repeat rows 9 and 10 through row 24, following color chart

Shaping the hat crown:

Double Decrease = slip 1, K2tog, PSSO

Row 1: (RS) [K10 sts, work double decrease, place marker]* Repeat to last st, K1 (67 sts)

Row 2: (WS) P all sts

Row 3: (RS) [K8 sts, work double decrease, (3 sts before marker), sl marker]* Repeat to last st, K1 (55 sts)

Row 4: (WS) P all sts

Row 5: (RS) [K6 sts, work double decrease, (3 sts before marker), sl marker]* Repeat to last st, K1 (43 sts)

Row 6: (WS) P all sts

Row 7: (RS) [K4 sts, work double decrease, (3 sts before marker), sl marker]* Repeat to last st, K1 (31 sts)

Row 8: (WS) P all sts

Row 9: (RS) [K2 sts, work double decrease, (3 sts before marker), sl marker]* Repeat to last st, K1 (19 sts)

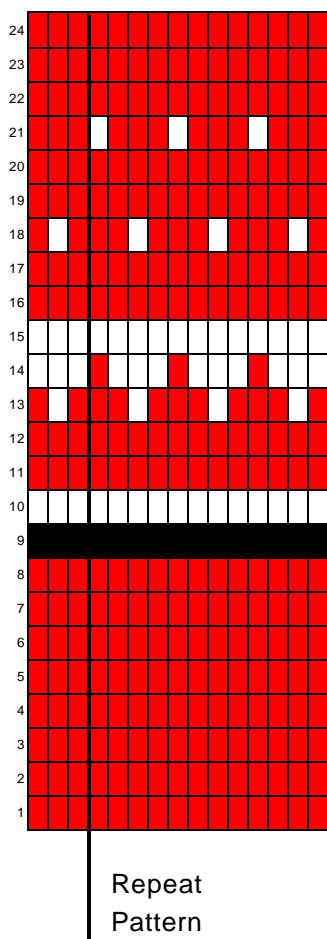
Row 10: (WS) P all sts

Row 11: (RS) Work double decrease across entire row to last st, K1 (7 sts)

Cut yarn, leaving about a 10-inch tail. Thread yarn through needle and pull yarn through the 7 live sts on your working needle. Pull tight and tack down. Weave in all yarn ends. Sew up seam. Make pom-pom and attach to hat on top.

To make pom-pom, wind yarn around a 1 inch square piece of cardboard. Remove from cardboard and tie a piece of yarn around the middle. Cut yarn loops and trim pom-pom to size. Attach pom-pom to top of hat. Weave in yarn ends

Color chart for hat #1



Repeat pattern between lines. Pattern is repeated to last three sts, then finish to the end as shown above. Start on row 9 on right side working from right to left. On the wrong side you work from left to right. First 8 rows are worked in main color in rib pattern.

© 2009 DollsWest Designs

Large Toboggan Hat #2 (Fits heads 8-9 inches)

Yarn: Jamieson's Lace Weight Shetland wool

Gauge: 11 sts per inch and 14 rows per inch on size 2/0 (1.75 mm) needles

Using main color yarn, cast on 103 stitches on 2/0 needles.

Work rib pattern as follows:

Row 1 (RS): [K1, P1]* Repeat to last st, K1

Row 2 (WS): [P1, K1]* Repeat to last st, P1

Repeat rows 1 and 2 for 4 more times, for a total of **10 rows of rib pattern.**

Hat Body: Work color pattern according to chart (page 5). You can ignore the chart and work it in one single color if you so desire.

Begin stockinette stitch pattern:

Row 11: (RS) K all sts in main color

Row 12: (WS) P all sts in main color

Row 13: (RS) K all sts (follow color chart)

Row 14: (WS) P all sts (follow color chart)

Rows 15 through 26: Follow color chart

Rows 27 through 30: Work in main color in stockinette stitch pattern

Begin Decrease to shape cap. Work as follows:

Row 1: [K6, K2tog]* Repeat to last 7 sts, K7 (91 sts)

Row 2: P

Row 3: [K5, K2tog]* Repeat across to end (78 sts)

Row 4: P

Row 5: [K4, K2tog]* Repeat across to end (65 sts)

Row 6: P

Row 7: [K3, K2tog]* Repeat across to end (52 sts)

Row 8: P

Row 9: [K2, K2tog]* Repeat across to end (39 sts)

Row 10: P

Row 11: [K1, K2tog]* Repeat across to end (26 sts)

Row 12: P

Row 13: [K2tog]* Repeat across to end (13 sts)

Row 14: P

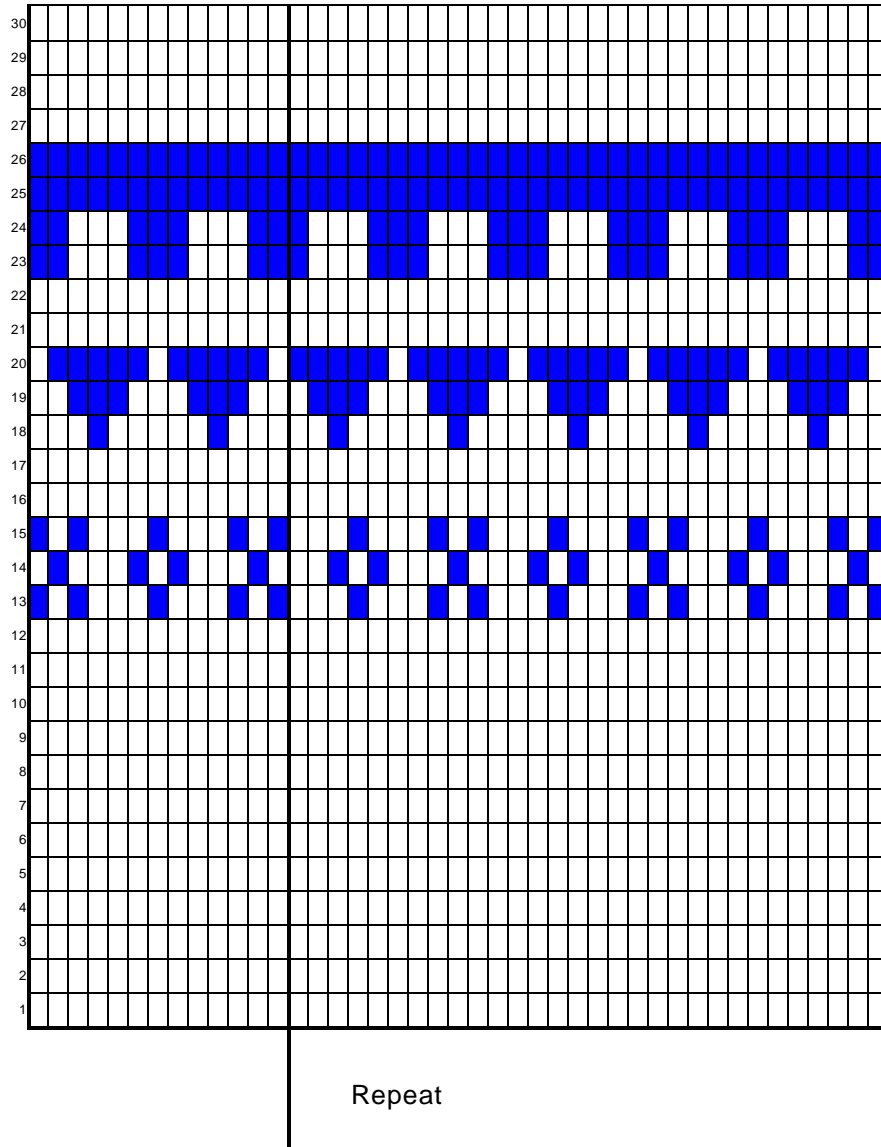
Row 15: [K2tog]* Repeat to last st, K1 (7 sts)

Pull yarn through all 7 stitches, pull taut, tack down and sew up seam. Weave in yarn ends. Steam and block hat.

Make pom-pom and attach to top of hat.

To make pom-pom, wind yarn around a 1 inch square piece of cardboard. Remove from cardboard and tie a piece of yarn around the middle. Cut yarn loops and trim pom-pom to size. Attach pom-pom to top of hat. Weave in yarn ends

Color Chart #2



Repeat pattern between lines. Pattern is repeated three times, then finish last 13 sts to complete the rows. Start on row 13 on right side working from right to left. On the wrong side you work from left to right. First 12 rows are worked in main color in rib pattern. Rows 11 and 12 are worked in main color in stockinette stitch pattern.

Abbreviations

Beg	Beginning
B/O	Bind off (cast off sts)
C4F	Slip 2 sts onto cn and hold at front of work, K2, K2 from cn
C4B	Slip 2 sts onto cn and hold at back of work, K2, K2 from cn
CC	Contrast Color
Cn	Cable needle
C/O	Cast on
Cont	Continue
Dc	Double crochet
Dec	Decrease
DPN(s)	Double pointed needle(s)
Foll	Following
Inc	Increase
KFB	Knit 1 in front and back of stitch
K2tog	Knit 2 together
K3tog	Knit 3 together
M1	Make one
M1P	Make one Purl
MC	Main Color
P	Purl
P2tog	Purl 2 together
PM	Place marker
PSSO	Pass slipped stitch over
Rem	Remaining
Rep	Repeat
RS	Right Side
Sc	Single crochet
Sl	slip
SKP	Slip, Knit, Pass
SK2P	Slip 1, Knit 2 together, Pass slipped stitch over
SSK	Slip, Slip, Knit
St(s)	Stitch(es)
St st	Stockinette stitch
WS	Wrong side
WYIB	With yarn in back
WYIF	With yarn in front
Yfwd	Yarn forward, or to the front, knit next stitch
YO	Yarn Over

NEEDLE SIZE

US Size	5/0	4/0	3/0	2/0	0	1	2
Metric size	1mm	1.2mm	1.5mm	1.75mm	2mm	2.25mm	2.75mm